



Community Newsletter

Construction update  
January/February 2024

# Consort Place

## Consort Place community newsletter

Our newsletters keep  
the community up to  
date with construction  
at Consort Place

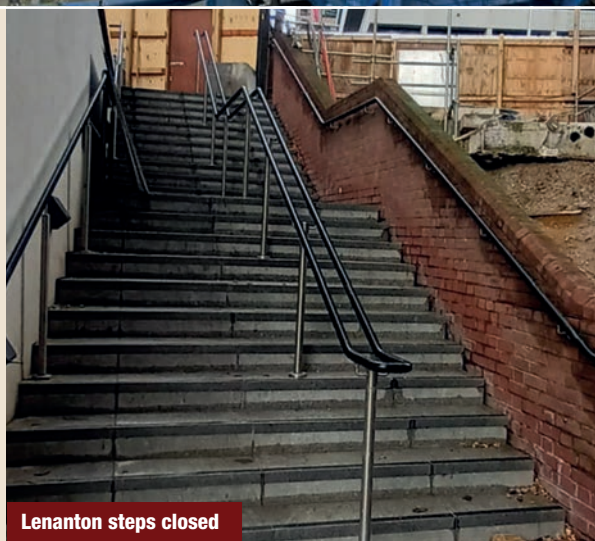
Last level of façade install commenced  
at East Tower

### Local people to help build Consort Place

We are working with Tower Hamlets  
Council to help provide jobs and  
apprenticeships to local people.

### Would you like to help build Consort Place?

Please express an interest at:  
[consortplaceconstruction@  
secnewgate.co.uk](mailto:consortplaceconstruction@secnewgate.co.uk)



Lenanton steps closed

### Lenanton steps closed

Lenanton steps are now  
closed so that landscaping  
work can take place. The  
demolition for landscaping  
commenced last month.  
Please use alternative  
routes.

*See map overleaf*

### Keeping in touch

We produce monthly newsletters updating the local community on progress at Consort Place.

**We can also text and email you our latest news – please contact us to register.**

0800 0837992 | [consortplaceconstruction@secnewgate.co.uk](mailto:consortplaceconstruction@secnewgate.co.uk) | [www.consortplaceconstruction.com](http://www.consortplaceconstruction.com)



## Our construction update

### January construction update | West Tower

- School façade installation continued
- School shell and core works continued

### East Tower and Hotel Tower

- Façade installation continued
- East Tower entrance landscaping work began
- M&E roof plant installation began
- Lower floor apartment fit-out continued
- Hotel Tower Building Maintenance Unit was completed

### Our plan for February | West Tower

- School façade work will continue
- School shell and core works will continue

### East Tower and Hotel Tower

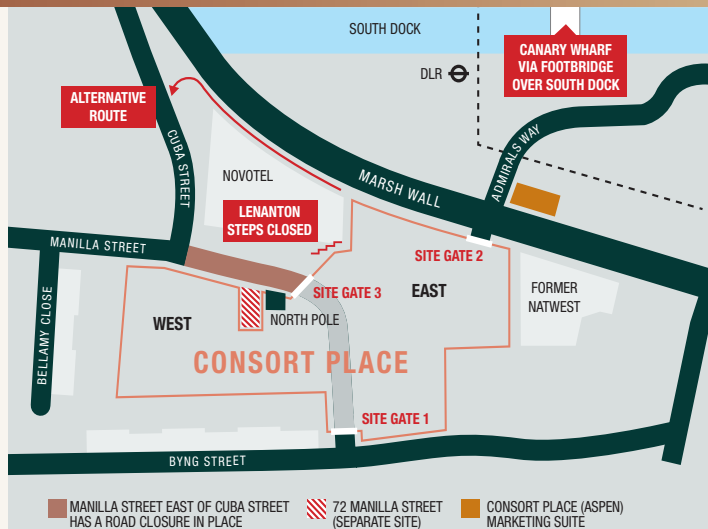
- Façade installation will continue
- East Tower entrance landscaping works continues
- M&E roof plant installation will continue
- Apartment fit-out will continue
- Hotel Tower façade to be completed (excluding hoist infill)

## Our working hours

Our standard working hours are:

**Monday to Friday 8am-6pm and Saturday 8am-1pm**

We apologise for any inconvenience caused and thank residents for their patience.



### East Tower façade installation



### Consort Place: Who's Who?



FEC Developer



Midgard Principal Contractor



SEC Newgate Engaging with the local community

## Keeping in touch

We produce monthly newsletters updating the local community on progress at Consort Place.

**We can also text and email you our latest news – please contact us to register.**

0800 0837992 | consortplaceconstruction@secnewgate.co.uk | www.consortplaceconstruction.com