



Community Newsletter

# Consort Place

Construction update  
October/November 2023

## Consort Place community newsletter

Our newsletters keep the community up to date with construction at Consort Place.



East Tower steel roof works

### Local people to help build Consort Place

We are working with Tower Hamlets Council to help provide jobs and apprenticeships to local people.

#### Would you like to help build Consort Place?

Please express an interest at:  
[consortplaceconstruction@secnewgate.co.uk](mailto:consortplaceconstruction@secnewgate.co.uk)

### Keeping in touch

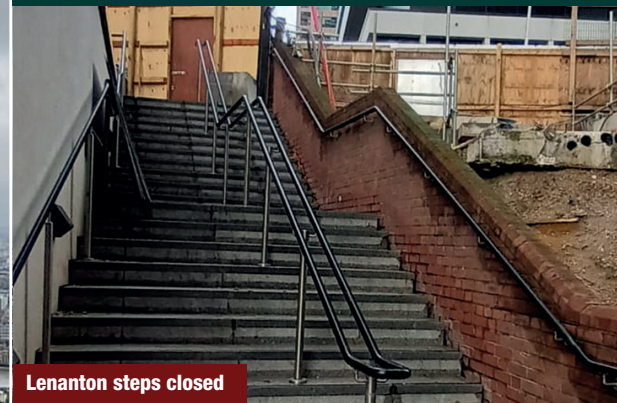
We produce monthly newsletters updating the local community on progress at Consort Place.

We can also text and email you our latest news – please contact us to register.

0800 0837992 | [consortplaceconstruction@secnewgate.co.uk](mailto:consortplaceconstruction@secnewgate.co.uk) | [www.consortplaceconstruction.com](http://www.consortplaceconstruction.com)

### Lenanton steps closed

Lenanton steps are now closed so that landscaping work can take place this month. Please use alternative routes (see map overleaf). Other work this month will include continued façade installation and internal fit-outs, and dismantling of the hotel roof crane.



Lenanton steps closed

### West Tower signage in place



FLOOR	AMENITY
30	ROOF TERRACE
6 - 32	RESIDENCES
5	PLAY SPACE
	RESIDENTS LOUNGE
LG	MAIN ENTRANCE
B2	CYCLE STORE W1 - 2



## Our construction update

### October construction update | West Tower

- School lift works
- School façade works
- School fit-out works began
- Final roof works

### East Tower and Hotel Tower

- Lenanton steps were closed for landscaping works
- East Tower façade installation continued
- Apartment and hotel fit-out continued
- More Hotel façade installation
- Work began on hotel and East Tower entrance areas
- East Tower roof steel work in progress

### Our plan for November | West Tower

- Section 2 handover (L6-32 apartments, residential entrance and car park)
- School lift works will continue
- School façade works will continue
- School fit-out works will continue

### East Tower and Hotel Tower

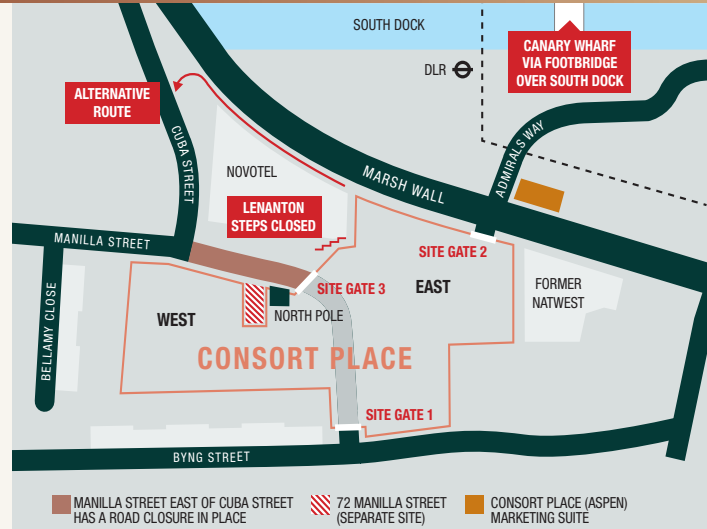
- Lenanton steps landscaping works will begin
- East Tower façade installation will continue
- Complete hotel façade installation
- Apartment and hotel fit-out to continue
- Hotel and East Tower amenity works will continue
- Dismantling hotel roof crane
- East Tower roof steel work to continue

## Our working hours

Our standard working hours are:

**Monday to Friday 8am-6pm and Saturday 8am-1pm**

We apologise for any inconvenience caused and thank residents for their patience.



### East Tower facade installation continues



## Consort Place: Who's Who?



FEC Developer



Midgard Principal Contractor



SEC Newgate Engaging with the local community

## Keeping in touch

We produce monthly newsletters updating the local community on progress at Consort Place.

**We can also text and email you our latest news – please contact us to register.**

0800 0837992 | consortplaceconstruction@secnewgate.co.uk | www.consortplaceconstruction.com