



Community Newsletter

Consort Place

Construction update
November/December 2023

Consort Place community newsletter

Our newsletters keep the community up to date with construction at Consort Place



Hotel Tower terrace and façade works

Local people to help build Consort Place

We are working with Tower Hamlets Council to help provide jobs and apprenticeships to local people.

Would you like to help build Consort Place?

Please express an interest at:
consortplaceconstruction@secnewgate.co.uk

Keeping in touch

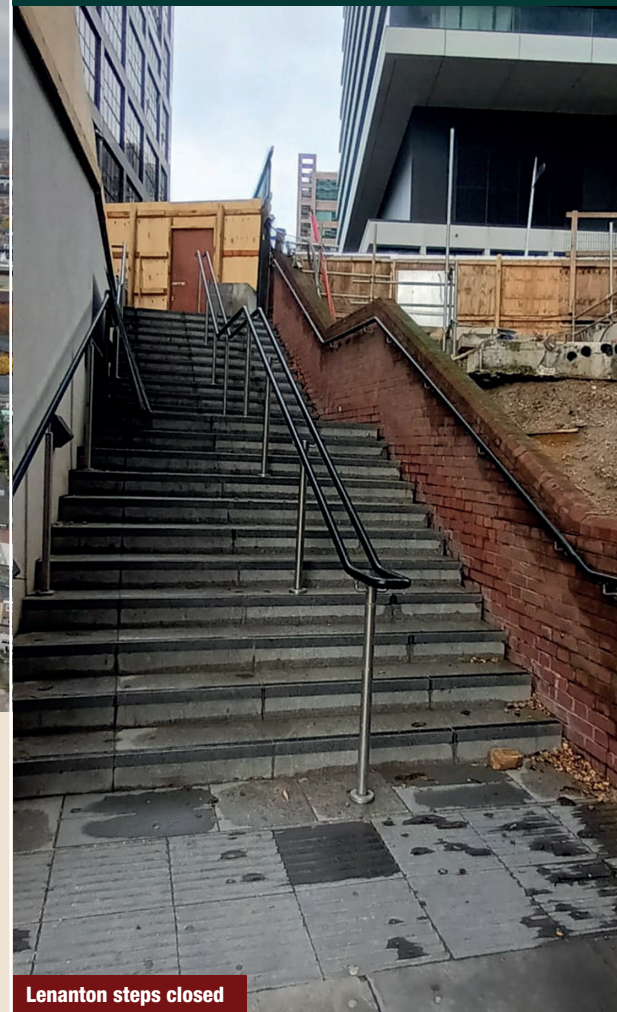
We produce monthly newsletters updating the local community on progress at Consort Place.

We can also text and email you our latest news – please contact us to register.

0800 0837992 | consortplaceconstruction@secnewgate.co.uk | www.consortplaceconstruction.com

Lenanton steps closed

Lenanton steps are now closed so that landscaping work can take place. The demolition for landscaping commenced last month. Please use alternative routes (see map overleaf).



Lenanton steps closed



Our construction update

November construction update | West Tower

- School lift, fit-out and façade works
- Final roof works
- Section 2 handover (L6-32 apartments, residential entrance and car park) began

East Tower and Hotel Tower

- Completed East tower top screen removal
- East Tower façade installation continued
- Apartment and hotel fit-out continued
- Hotel terrace façade installation under way
- Work continued on Hotel and East Tower entrance areas
- East Tower roof steel works continued
- Began removal of Hotel hoist

Our plan for December | West Tower

- Start dismantling School hoist
- Continue School lift, façade and fit-out works

East Tower and Hotel Tower

- Complete Hotel façade
- Continue installation of East Tower and Hotel terrace façade
- Apartment and hotel fit-out to continue
- Hotel and East Tower amenity works will continue
- Continue dismantling Hotel hoist
- East Tower roof steel work to continue
- Installation of the East tower and Hotel Building Maintenance Units (BMUs)

Our working hours

Our standard working hours are:

Monday to Friday 8am-6pm and Saturday 8am-1pm

We apologise for any inconvenience caused and thank residents for their patience.

Consort Place: Who's Who?



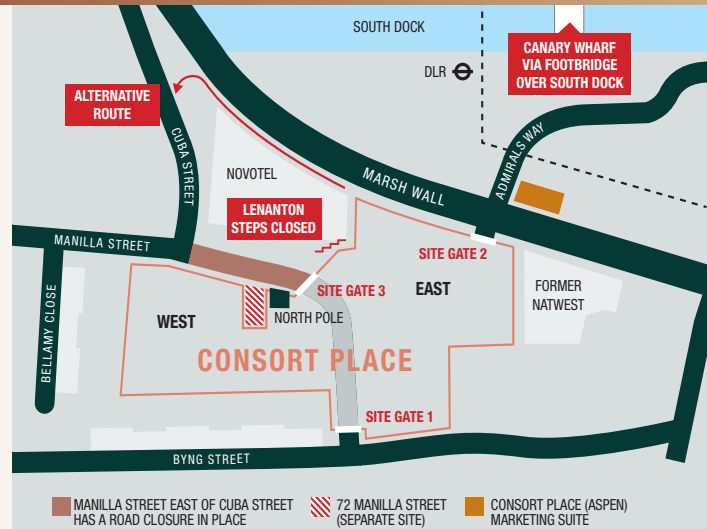
FEC Developer



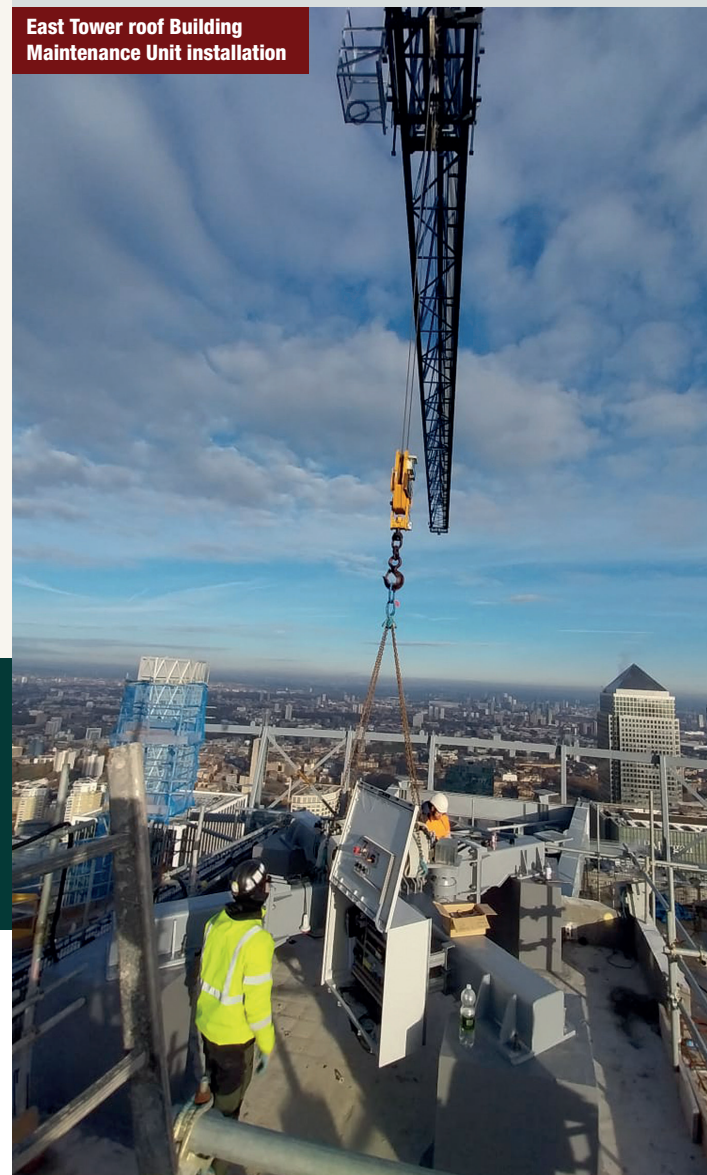
Midgard Principal Contractor



SEC Newgate Engaging with the local community



East Tower roof Building Maintenance Unit installation



Keeping in touch

We produce monthly newsletters updating the local community on progress at Consort Place.

We can also text and email you our latest news – please contact us to register.

0800 0837992 | consortplaceconstruction@secnewgate.co.uk | www.consortplaceconstruction.com