



Community Newsletter

Construction update
August 2021

Consort Place

Formerly known as Alpha Square

Consort Place community newsletter

Our newsletters keep the
community up to date with
construction at Consort Place.



CGI of the North Pole pub upon completion.

Local people to help build Consort Place

We are working with Tower Hamlets Council to help provide jobs and apprenticeships to local people.

Would you like to help build Consort Place?

Please express an interest at:
consortplaceconstruction@secnewgate.co.uk

Keeping in touch

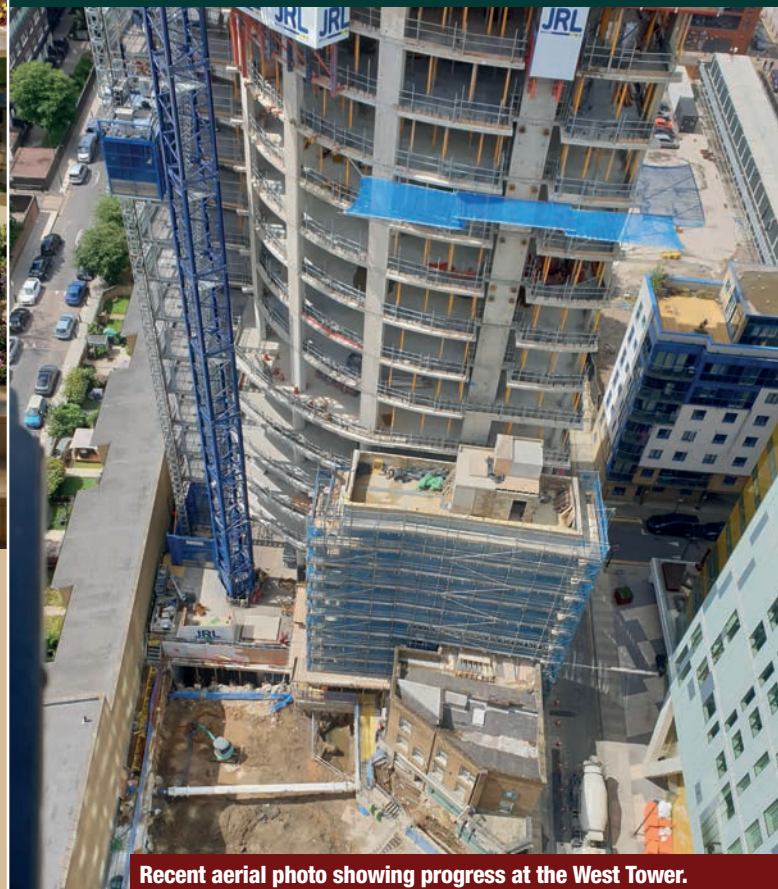
We produce monthly newsletters updating the local community on progress at Consort Place.

We can also text and email you our latest news – please contact us to register.

07718 489739 | consortplaceconstruction@secnewgate.co.uk | www.consortplaceconstruction.com

Central basement progress continues

Once Consort Place is finished (expected 2024), the area adjacent to the North Pole will have new public realm (see left). Currently, we are excavating soil and installing utility services, and will now begin pouring concrete up to street level. We expect to complete the basement this Autumn.



Recent aerial photo showing progress at the West Tower.



Our construction update

Works undertaken in August

West Tower

- Concrete pouring from the slipform rig to build the tower's core and frame.
- Safety screens installed prior to commencing façade works.
- Passenger hoist installed.
- High voltage substation build continued.

East Tower and Hotel Tower

- Concrete pouring from the slipform rig to build the tower's core and frame.

Other

- Excavation of soil in central area.

Our plan for September

West Tower

- Slipform and hoist will continue to pour concrete for the tower's core and frame.
- High voltage substation build and fit out will continue.
- Bathroom modular units deliveries will continue.

East Tower

- Slipform and hoist will continue to pour concrete for the tower's core and frame.
- Installation of structural steel will begin.

Other

- Excavation of central basement continues (soil removal).
- Continue to install blockwork to basement.
- Pouring of concrete for central basement will commence.
- Complete the UKPS Manilla Street electrical works.

Our working hours

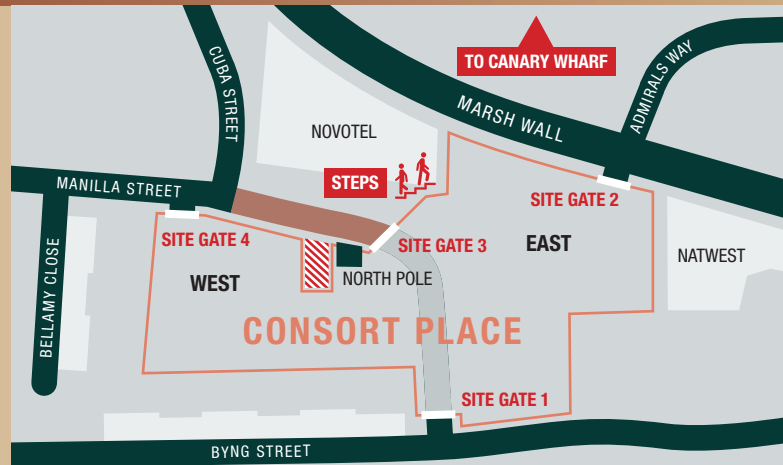
We know that many people are still working from home and we try to minimise noisy works.

We follow Covid-19 regulations and these are having an impact on our progress on site.

To mitigate this, in the past we have worked extended hours in line with government guidance (7am-8pm). However, after considering feedback from residents and other stakeholders, we have amended our working hours for the time being.

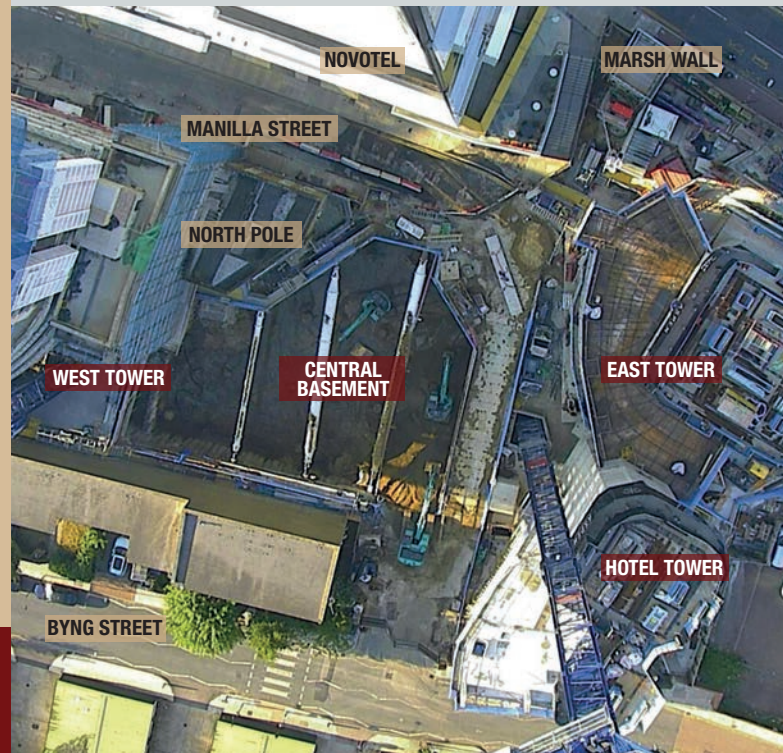
Our standard working hours are:

Monday-to Friday 8am-6pm and Saturday 8am-1pm



MANILLA STREET EAST OF CUBA STREET HAS A ROAD CLOSURE IN PLACE

72 MANILLA STREET (SEPARATE SITE)



Consort Place: Who's Who?



FEC
Developer



Midgard
Principal Contractor



SEC Newgate
Engaging with the local community

Keeping in touch

We produce monthly newsletters updating the local community on progress at Consort Place.

We can also text and email you our latest news – please contact us to register.

07718 489739 | consortplaceconstruction@secnewgate.co.uk | www.consortplaceconstruction.com